

EZ Ride

Pneumatic and Semi-pneumatic
Never-Flat Solutions













EZ Ride Features

- Designed for tough terrain
- Cushion floor protection
- Reduced maintenance costs
- Rolls over cables and other uneven floor obstructions
- Choice of Pneumatic or Never-Flat caster models
- Shock absorbing and smooth impact resistant even on grass, gravel and dirt terrain
- Excellent protection for mobile sensitive equipment

colson®
GROUP

ROLLING AT THE
SPEED OF LIFE

Contents

Air Ride	Page	Cushion Ride (Continued)...	Page
Pemco Pnuline.....	3	Albion Never-Flat SZ/SV ..	8, 10
			
Jarvis Bellman	4	Albion Gate Casters.....	9
			
Albion Pneumatic.....	4-5	Replacement Wheels.....	10-12
			
Albion Pneumatic Dual	6	Hand Truck Wheels	13-14
			
Cushion Ride			
Pemco Never-Flat	7		
			
Albion Never-Flat CR	7		
			

Introducing the EZ-Ride portfolio by Colson Group.

Combining Colson Group's most common pneumatic and semi-pneumatic caster and wheel solutions in one convenient location. Within this product showcase you can now find and compare all pneumatic offerings across Colson, Albion, and Pemco in one convenient product grouping.

The wheels in this offering include our traditional pneumatic (pressurized), semi-pneumatics and the newest Never-Flat PF micro cellular polyurethane technology guaranteed to never run flat. Our Pneumatic product segment has deep range wheel variants running from 6" all the way to 18" diameters and from 2" wide to 5" wide solutions.

Whether you are looking for light, medium or heavy duty pneumatics the EZ-Ride portfolio covers and provides solutions for an impressive range of applications and industries

3 Piece Hubs

The three-piece design of many Colson Group pneumatic and never flat tires features a core, a spun inner barrel and a spun outer barrel (the lip). These three pieces are then bolted together to form an economical and durable 3-piece hub.



Tread Patterns



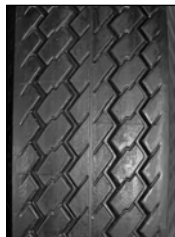
Pemco Pnuline tread pattern (see page 3 and 12-13)



Albion SF tread pattern (see page 3-8 and 12)



Jarvis Bellman (see page 4 and 11)



Pemco and Albion NeverFlat (see page 7 and 13)



Albion CR Crumb (see page 7, 9, 12 and 13)



Albion NeverFlat (see page 10, 11, 12 and 13)

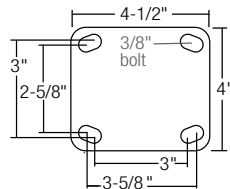
Pnuline Pneumatic

PEMCO



FEATURES

- Double ball raceways for smooth swiveling action
- Zerk fitting in axle and swivel raceway for easy maintenance
- 3/16" thick steel leg construction
- 5/8" diameter kingpin
- RoHS compliant industrial zinc finish for corrosion resistance



WARRANTY: 1 year



- 4-Ply sawtooth pattern
- Zerk fitting
- Air nozzle
- Precision ball bearing
- Zinc plated rims

AIR RIDE
PNEUMATIC



Nominal Wheel Dia.	Nominal Tread Width	Max. Air Pressure	Tire Type	Bearing	Load Capacity (lbs)	Nominal Mount Height	Nominal Swivel Radius	Approx. Weight (lbs)	Swivel Caster Part #	Swivel Caster With Brake Part #	Rigid Caster Part #
8"	2.80"	50 PSI	2.80/2.50-4; 4-ply	Precision Ball	300	10.00"	6.56"	9.00	PNU80SWL	PNU80SWLB	PNU80RGD
10"	4.10"	50 PSI	4.10/3.50-4; 4-ply	Precision Ball	350	12.00"	7.69"	11.00	PNU10SWL	PNU10SWLB	PNU10RGD
12"	4.10"	30 PSI	4.10/3.50-6; 4-ply	Precision Ball	450	15.19"	9.19"	14.00	PNU12SWL	PNU12SWLB	PNU12RGD

All load ratings are based on walking speed, consult engineering for load rating of towing applications

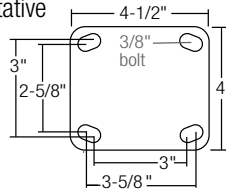
16 Series Pneumatic

ALBION



FEATURES

- Double ball raceways for smooth swiveling action
- Zerk fitting in axle and swivel raceway for easy maintenance
- 1/4" thick steel leg construction
- 3/4" diameter kingpin
- Optional welded or field installable swivel lock available, consult your sales representative



WARRANTY: 3 years



- Zerk fitting
- Air nozzle
- Industrial or roller bearing
- Powder coated rims



Nominal Wheel Dia.	Nominal Tread Width	Max. Air Pressure	Tire Type	Bearing	Optional Bearing*	Load Cap. (lbs)	Nominal Mount Height	Nominal Swivel Radius	Approx. Weight (lbs)	Swivel Caster Part #	Swivel Caster With Brake Part #	Rigid Caster Part #
6"	2.00"	50 PSI	2; 4-ply	Industrial Ball	—	200	7.25"	3.75"	8.50	16SF06227S	16SF06227SFBA	16SF06227R
8"	2.00"	50 PSI	2; 4-ply	Industrial Ball	—	210	9.50"	5.75"	9.00	16SF08227S	16SF08227SFBA	16SF08227R
8"	2.50"	50 PSI	2.5/2.3-4; 4-ply	Industrial Ball	Roller	220	10.13"	6.10"	7.00	16SF08427S	16SF08427SF	16SF08427R
8"	2.80"	50 PSI	2.8/2.5-4; 4-ply	Industrial Ball	Roller	295	11.00"	7.13"	9.50	16SF08527S	16SF08527SF	16SF08527R
10"	4.10"	50 PSI	4.10/3.50-4; 4-ply	Industrial Ball	Roller	350	13.00"	8.75"	11.00	16SF10627S	16SF10627SF	16SF10627R
12"	4.10"	50 PSI	4.1/3.5-6; 4-ply	Industrial Ball	—	445	15.50"	10.25"	14.25	16SF12727S	16SF12727SF	16SF12727R

*For straight roller bearing models, change 8th and 9th digits (27) to 01. Example: 16SF08401S.

All load ratings are based on walking speed, consult engineering for load rating of towing applications



Jarvis Bellman Pneumatic

AIR RIDE PNEUMATIC



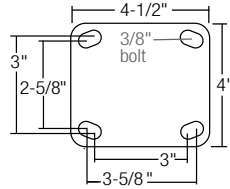
FEATURES

- Choice of brass or bright chrome plated finish
- Double ball raceways for smooth swiveling action
- 5/8" diameter kingpin
- Optional swivel lock available, consult your sales representative

WARRANTY: 3 year



- Premium quality designed to prevent lops and wobble
- Air nozzle
- Precision ball bearing
- Brass or chrome plated rims



Nominal Wheel Dia.	Nominal Tread Width	Max. Air Pressure	Tire Type	Bearing	Load Capacity (lbs)	Nominal Mount Height	Nominal Swivel Radius	Approx. Weight (lbs)	Brass Plated Swivel Caster Part #	Brass Plated Rigid Caster Part #	Bright Chrome Plated Swivel Caster Part #	Bright Chrome Plated Rigid Caster Part #
8"	2.80"	50 PSI	2.80/2.50	Radial Ball	310	9.50"	6.25"	8.00	8-W81-940-1GSPB	8-W82-940-1GSPB	8-W81-940-1PC	8-W82-940-1PC

All load ratings are based on walking speed, consult engineering for load rating of towing applications



110 Series Kingpinless Pneumatic



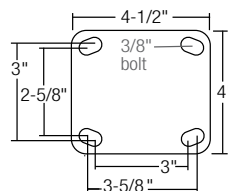
FEATURES

- Durable kingpinless design features 3/8" ball bearings mounted in heat treated precision machined raceway
- AISI 1045 steel
- Optional swivel lock available, consult your sales representative

WARRANTY: 3 years



- Air nozzle
- Industrial bearing
- The finish on these wheel cores can vary



Nominal Wheel Dia.	Nominal Tread Width	Max. Air Pressure	Tire Type	Bearing	Load Capacity (lbs)	Nominal Mount Height	Nominal Swivel Radius	Approx. Weight (lbs)	Swivel Caster Part #	Swivel Caster With Brake Part #	Rigid Caster Part #
10"	3.50"	50 PSI	3.5/4.10-4	Industrial Ball	350	13.00"	18.75"	14.00	110SF10627S	110SF10627SF	110SF10627R

All load ratings are based on walking speed, consult engineering for load rating of towing applications

72 Series Pneumatic

ALBION



FEATURES

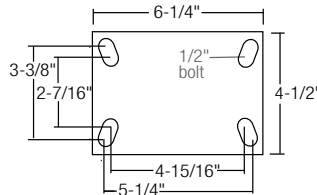
- Rugged AISI 1045 drop forged
- Double ball bearing "deep-groove" load and machined component thrust raceways
- 1/4" thick steel leg construction
- 3/4" diameter heat treated king bolt
- Optional swivel lock available, consult your sales representative

WARRANTY: 3 years



- Air nozzle
- Industrial ball bearing
- Zinc plated rims

AIR RIDE PNEUMATIC



F Brake

Nominal Wheel Dia.	Nominal read Width	Max. Air Pressure	Tire Type	Bearing	Load Capacity (lbs)	Nominal Mount Height	Nominal Swivel Radius	Approx. Weight (lbs)	Swivel Caster Part #	Swivel Caster With Brake Part #	Rigid Caster Part #
8"	2.80"	50 PSI	2.5/2.3-4	Industrial Ball	295	11.0"	7.13"	12.75	72SF08527S	72SF08527SF	72SF08527R
10"	3.50"	50 PSI	3.5/4.10-4	Industrial Ball	350	13.0"	11.75"	14.25	72SF10627S	72SF10627SF	72SF10627R
12"	4.10"	50 PSI	4.1/3.5-6	Industrial Ball	445	15.5"	10.10"	17.50	72SF12727S	72SF12727SF	72SF10627R

All load ratings are based on walking speed, consult engineering for load rating of towing applications

90 Series Pneumatic

ALBION



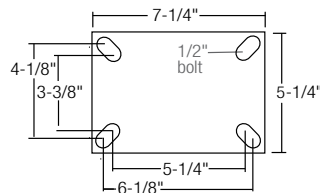
FEATURES

- 90 Series handles more abuse compared to 72 Series
- 4" diameter deep-grooved load raceway with 1/2" steel balls for better load distribution. The thrust race is 2-5/8" diameter using 3/8" diameter steel balls for increased capacity
- 3/8" thick steel leg construction
- 1" diameter heat treated king bolt
- Optional swivel lock available, consult your sales representative

WARRANTY: 3 years



- Air nozzle
- Straight roller bearing
- Powder coated rims



F Brake

Nominal Wheel Dia.	Nominal Tread Width	Max. Air Pressure	Tire Type	Bearing	Load Capacity (lbs)	Nominal Mount Height	Nominal Swivel Radius	Approx. Weight (lbs)	Swivel Caster Part #	Swivel Caster With Brake Part #	Rigid Caster Part #
14"	5.30"	38 PSI	5.3/4.5-6	Straight Roller	350	19.13"	11.00"	29.25	90SF14801S	90SF14801SF	90SF14801R
16"	4.80"	90 PSI	4.8/4.1-8	Straight Roller	445	15.50"	13.00"	35.50	90SF16801S	90SF16801SF	90SF16801R

All load ratings are based on walking speed, consult engineering for load rating of towing applications

272 Series Pneumatic

AIR RIDE PNEUMATIC



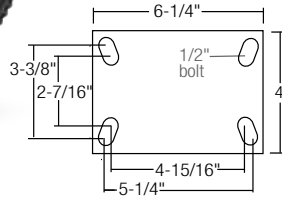
FEATURES

- Rugged AISI 1045 drop forged
- Double ball bearing “deep-groove” load and machined component thrust raceways
- 1/4" thick steel leg construction
- 3/4" diameter heat treated king bolt
- Optional swivel lock available, consult your sales representative

WARRANTY: 3 year



- Air nozzle
- Industrial ball bearing
- Zinc plated rims



Nominal Wheel Dia.	Nominal Tread Width	Max. Air Pressure	Tire Type	Bearing	Load Capacity (lbs)	Nominal Mount Height	Nominal Swivel Radius	Approx. Weight (lbs)	Swivel Caster Part #	Swivel Caster With Brake Part #	Rigid Caster Part #
8"	2.80"	50 PSI	2.8/2.5-4	Industrial Ball	590	11.00"	8.56"	20.00	272SF08527S	272SF08527SF	272SF08527R
10"	4.10"	50 PSI	4.10/3.50-4	Industrial Ball	700	13.00"	10.19"	21.75	272SF10627S	272SF10627SF	272SF10627R

All load ratings are based on walking speed, consult engineering for load rating of towing applications

290 Series Pneumatic



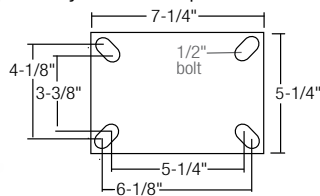
FEATURES

- 4" diameter deep-grooved load raceway with 1/2" steel balls for better load distribution. The thrust race is 2-5/8" diameter using 3/8" diameter steel balls for increased capacity
- Zerk fitting in axle and swivel raceway for easy maintenance
- 3/8" thick steel leg construction
- 1" diameter heat treated king bolt
- Optional swivel lock available, consult your sales representative

WARRANTY: 3 year



- Air nozzle
- Straight roller bearing
- Powder coated rims



Nominal Wheel Dia.	Nominal Tread Width	Max. Air Pressure PSI	Tire Type	Bearing	Load Capacity (lbs)	Nominal Mount Height	Nominal Swivel Radius	Approx. Weight (lbs)	Swivel Caster Part #	Swivel Caster With Brake Part #	Rigid Caster Part #
12"	4.10"	50 PSI	4.1/3.5-6	Straight Roller	890	15.50"	11.81"; Brake: 14.00"	35.00	290SF12701S	290SF12701SF	290SF12701R
14"	5.30"	38 PSI	5.3/4.3-6	Straight Roller	1,570	17.75"	11.38"; Brake 15.63"	41.00	290SF14801S	290SF14801SF	290SF14801R
16"	4.80"	90 PSI	4.8/4.1-8	Straight Roller	2,000	19.13"	12.50"; Brake 15.63"	53.25	290SF16801S	290SF16801SF	290SF16801R
18"	5.70"	75 PSI	5.7/5.2-8	Straight Roller	2,340	21.25"	15.72"; Brake 17.28"	59.75	290SF18901S	290SF18901SF	290SF18901R

All load ratings are based on walking speed, consult engineering for load rating of towing applications

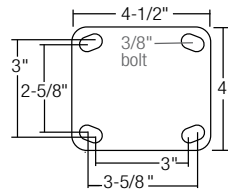
Pemco Never-Flat

PEMCO



FEATURES

- Sealed upper raceway keeps out dirt & debris
- Double ball raceways for smooth swiveling
- Corrosion resistant polypropylene core
- Optional painted or powder coated gray steel hub
- 3/16" thick steel leg construction
- 5/8" diameter kingpin
- RoHS compliant industrial zinc finish for corrosion resistance



WARRANTY: 1 year



- Unique Micro-Cellular Polyurethane wheel technology
- Acts just like a pneumatic tire ... but will never go flat
- Shock absorbing wheels provide ultimate cargo and floor protection
- Quiet, smooth mobility
- Zerk fitting for easy axle maintenance
- Sealed precision ball bearings standard



CUSHION RIDE
NEVER-FLAT

Nominal Wheel Dia.	Nominal Tread Width	Tire Type	Bearing	Load Capacity (lbs)	Nominal Mount Height	Nominal Swivel Radius	Approx. Weight (lbs)	Swivel Caster Part #	Swivel Caster With Brake Part #	Rigid Caster Part #
8"	2.80"	2.80/2.50-4	Precision Ball	275	10.00"	6.56"	7.00	NFPF80SWL	NFPF80SWLB	NFPF80RGD
10"	4.10"	4.10/3.50-4	Precision Ball	300	12.00"	7.69"	8.00	NFPF10SWL	NFPF10SWLB	NFPF10RGD
12"	4.10"	4.10/3.50-6	Precision Ball	500	15.19"	9.19"	10.00	NFPF12SWL	NFPF12SWLB	NFPF12RGD

All load ratings are based on walking speed, consult engineering for load rating of towing applications

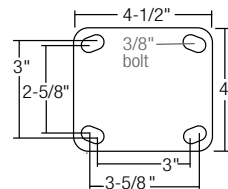
16 Series Never-Flat CR

ALBION



FEATURES

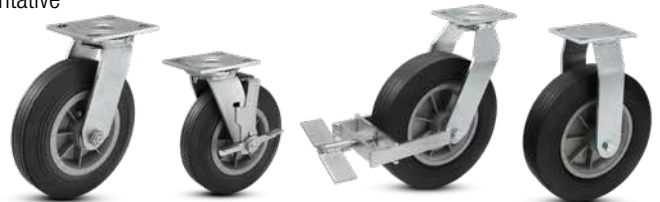
- Double ball raceways for smooth swiveling action
- Zerk fitting in axle and swivel raceway for easy maintenance
- 1/4" thick steel leg construction
- 3/4" diameter kingpin
- Slotted for optional swivel lock
- Optional swivel lock available, consult your sales representative



WARRANTY: 3 years



- Special blend of granular rubber and chemical accelerators, cured under tremendous pressure
- Polypropylene core
- Shock absorbing wheels provide ultimate cargo protection
- Quiet, smooth mobility
- Zerk fitting for easy axle maintenance
- Roller or industrial ball bearings



FBA Brake

F Brake



Made from recycled tire rubber

Nominal Wheel Dia.	Nominal Tread Width	Bearing	Load Cap. (lbs)	Nominal Mount Height	Nominal Swivel Radius	Approx. Weight (lbs)	Swivel Caster Part #	Swivel Caster With Brake Part #	Rigid Caster Part #
6"	1.50"	Straight Roller	300	7.50"	4.19"	6.00	16SF06101S	16CR06101SFBA	16CR06101R
8"	2.00"	Straight Roller	500	9.50"	5.81"	11.00	16SF08201S	16CR08201SFBA	16CR08201R
10"	2.50"	Industrial Ball	550	12.63"	9.00"	12.00	16SF10427S	16CR10427SF	16CR10427R
12"	3.00"	Industrial Ball	600	15.50"	10.00"	16.00	16SF12527S	16CR12527SF	16CR12527R

All load ratings are based on walking speed, consult engineering for load rating of towing applications

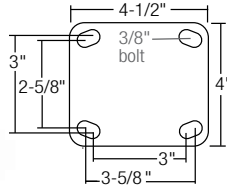
16 Series Never-Flat Black SZ

CUSHION RIDE
NEVER-FLAT



FEATURES

- Double ball raceways for smooth swiveling action
- 1/4" thick steel leg construction
- Optional swivel lock available, consult your sales representative



WARRANTY: 3 years



- Black Monoprene rubber SZ wheel provides you with all the benefits of a pneumatic tire, without the hassle of getting a flat
- Maintenance free wheels rejects debris
- Non-marking shock absorbing wheels provide ultimate cargo and floor protection
- Quiet, smooth mobility
- Zinc plated rim



Nominal Wheel Dia.	Nominal Tread Width	Bearing	Load Cap. (lbs)	Nominal Mount Height	Nominal Swivel Radius	Approx. Weight (lbs)	Swivel Caster Part #	Swivel Caster With Brake Part #	Rigid Caster Part #
6"	2.00"	Precision Ball	250	7.25"	5.00"	5.50	16SZ06228S	16SZ06228SFBA	16SZ06228R
8"	2.00"	Precision Ball	280	9.44"	5.75"	6.50	16SZ08228S	16SZ08228SFBA	16SZ08228R
	2.50"	Precision Ball	350	9.44"	5.75"	8.00	16SZ08428S	16SZ08428SFBA	16SZ08428R
10"	3.50"	Precision Ball	440	13.06"	8.75"	13.00	16SZ10628S	16SZ10628SF	16SZ10628R

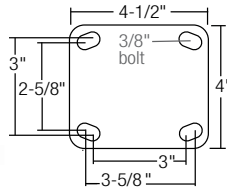
All load ratings are based on walking speed, consult engineering for load rating of towing applications

16 Series Never-Flat Gray SV



FEATURES

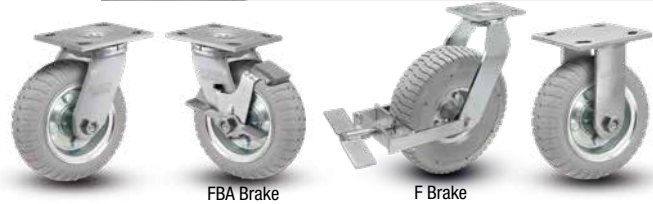
- Double ball raceways for smooth swiveling action
- 1/4" thick steel leg construction
- Optional swivel lock available, consult your sales representative



WARRANTY: 3 years



- Gray Monoprene rubber SV wheel provides you with all the benefits of a pneumatic tire, without the hassle of getting a flat
- Maintenance free wheels rejects debris
- Non-marking shock absorbing wheels provide ultimate cargo and floor protection
- Quiet, smooth mobility
- Zinc plated rim

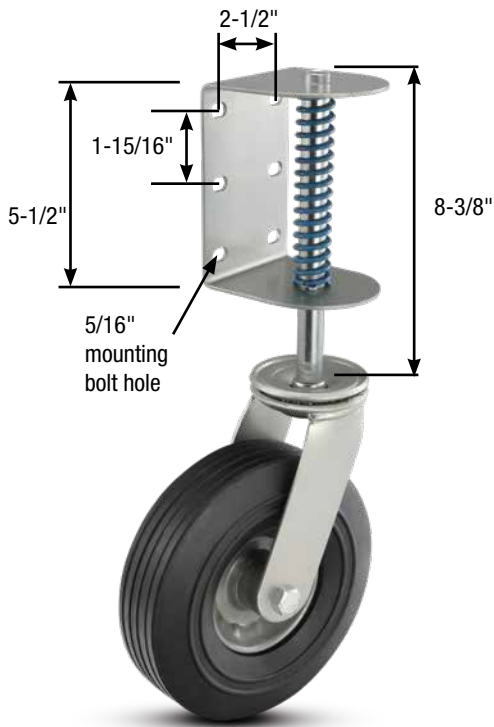


Nominal Wheel Dia.	Nominal Tread Width	Bearing	Load Cap. (lbs)	Nominal Mount Height	Nominal Swivel Radius	Approx. Weight (lbs)	Swivel Caster Part #	Swivel Caster With Brake Part #	Rigid Caster Part #
6"	2.00"	Precision Ball	250	7.25"	5.00"	5.50	16SV06228S	16SV06228SFBA	16SV0628R
8"	2.00"	Precision Ball	280	9.44"	5.75"	6.50	16SV08228S	16SV08228SFBA	16SV0828R
	2.50"	Precision Ball	350	9.44"	5.75"	8.00	16SV08428S	16SV08428SFBA	16SV0428R
10"	3.50"	Precision Ball	440	13.06"	8.75"	13.00	16SV10628S	16SV10628SF	16SV10628R

All load ratings are based on walking speed, consult engineering for load rating of towing applications

Albion Gate Caster

ALBION



FEATURES

- Gate mount integrated in caster
- Spring loaded design provides shock absorption

WARRANTY: 1 year



- Semi-pneumatic cushion ride. No air necessary.
- Acts just like a pneumatic tire ... but will never go flat
- Shock absorbing wheels provide ultimate cargo and floor protection
- Quiet, smooth mobility
- All bearings are pressure lubricated
- Industrial ball bearings
- Powder coated finish

Nominal Wheel Dia.	Nominal Tread Width	Bearing	Load Cap. (lbs)	Nominal Mount Height	Nominal Swivel Radius	Approx. Weight (lbs)	Swivel Caster Part #
10"	2.50"	Radial Ball	210	8.50"	6.19"	10.00	14SN08427S001



CUSHION RIDE
NEVER-FLAT

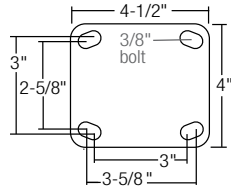
Colson Group can quote variations on these configurations, please contact us

CUSHION RIDE NEVER-FLAT



FEATURES

- Durable kingpinless design features 3/8" ball bearings mounted in heat treated precision machined raceway
- Zerk fitting in axle and swivel raceway for easy maintenance
- 1/4" thick steel leg construction
- Slotted for optional swivel lock



WARRANTY: 3 years



- Black Monoprene rubber SZ wheel provides you with all the benefits of a pneumatic tire, without the hassle of getting a flat
- Water resistant tread
- Maintenance free wheels rejects debris
- Non-marking shock absorbing wheels provide ultimate cargo and floor protection
- Quiet, smooth mobility
- Zinc plated rim



F Brake

Nominal Wheel Dia.	Nominal Tread Width	Bearing	Load Cap. (lbs)	Nominal Mount Height	Nominal Swivel Radius	Approx. Weight (lbs)	Swivel Caster Part #	Swivel Caster With Brake Part #	Rigid Caster Part #
10"	3.50"	Precision Ball	440	12.88"	8.63"	16.00	110SZ10628S	110SZ10628SF	16SZ10628R

Wheels



Colson Group Companies offer a complete line of pneumatic and semi-pneumatic replacement wheels.



Air Ride
(Page 11)



Cushion Ride
(Page 12)



Hand truck
(Page 13-14)

3-Piece Hub Design

- Many of our pneumatic wheels feature the 3-piece hubs
- The three-piece design features a core, a spun inner barrel and a spun outer barrel (the lip). These three pieces are then bolted together to form a 3-piece wheel.
- The design has an interesting look along with advantage of better fitment options and easier repair



Pneumatic Wheels for Casters



Pemco Pnuline Pneumatic Wheels

Nominal Wheel Dia.	Nominal Tread Width	Max. Air Pressure	Tire Type	Bearing	Load Capacity (lbs)	Bearing ID	Hub Length	Approx. Weight (lbs)	Wheel Part #
8"	2.80"	50 PSI	2.80/2.50-4	Precision Ball	300	.63"	3.50"	3.50	WH8X2.5PNU
10"	4.10"	50 PSI	4.10/3.50-4	Precision Ball	350	.63"	4.00"	5.00	WH10X3.5PNU
12"	4.10"	30 PSI	4.10/3.50-6	Precision Ball	450	.63"	4.00"	6.00	WH12X3.5PNU

These economical 4-Ply sawtooth pattern pneumatic features zerk fitting and air nozzle for easy maintenance. Wheels feature precision roller bearings for a smooth ride.



Albion Pneumatic Wheels

Nominal Wheel Dia.	Nominal Tread Width	Max. Air Pressure	Tire Type	Bearing	Load Capacity (lbs)	Bearing ID	Hub Length	Approx. Weight (lbs)	Wheel Part #
6"	2.00"	50 PSI	–	Industrial Ball	200	.50"	1.94"	2.00	SF0622708
8"	2.00"	50 PSI	–	Industrial Ball	210	.50"	2.44"	3.00	SF0822708
8"	2.50"	50 PSI	2.5/2.3-4	Industrial Ball	220	.50"	3.00"	3.00	SF0842708
	2.50"	50 PSI	2.5/2.3-4	Straight Roller	220	.75"	2.75"	4.25	SF0840112
9"	2.80"	50 PSI	2.8/2.5-4	Industrial Ball	295	.50"	3.50"	4.25	SF0852708
	2.80"	50 PSI	2.8/2.5-4	Straight Roller	295	.75"	3.50"	4.25	SF0850112
10"	4.10"	50 PSI	4.10/3.50-4	Industrial Ball	350	.50"	3.50"	5.25	SF1062708
	4.10"	50 PSI	4.10/3.50-4	Straight Roller	350	.75"	3.50"	5.25	SF1060112
12"	4.10"	50 PSI	4.1/3.5-6	Industrial Ball	445	.75"	4.50"	6.25	SF1272712
	4.10"	50 PSI	4.1/3.5-6	Industrial Ball	445	1.00"	4.50"	6.25	SF1270116
14"	5.30"	38 PSI	5.3/4.3-6	Straight Roller	785	1.00"	4.50"	9.00	SF1480116
16"	4.80"	90 PSI	4.8/4.1-8	Straight Roller	1,000	1.25"	6.00"	12.00	SF1680120
18"	5.70"	75 PSI	5.7/5.2-8	Straight Roller	1,170	1.25"	4.50"	15.00	SF1890120

Albion offers a complete line of pneumatic wheels from 6" to 18" in diameter. The durable wheels feature 4-Ply construction.



CUSHION RIDE
NEVER-FLAT

Jarvis Bellman Pneumatic Wheels With Brass Coated Hub

Nominal Wheel Dia.	Nominal Tread Width	Max. Air Pressure	Tire Type	Bearing	Load Cap. (lbs)	Bearing ID	Hub Length	Approx. Weight (lbs)	Wheel Part #
8"	2.80"	50 PSI	2.80/2.50-4	Radial Ball	310	.50"	3.00"	3.50	8-940BLKBRASS



Jarvis Bellman Pneumatic Wheels With Chrome Coated Hub

Nominal Wheel Dia.	Nominal Tread Width	Max. Air Pressure	Tire Type	Bearing	Load Cap. (lbs)	Bearing ID	Hub Length	Approx. Weight (lbs)	Wheel Part #
8"	2.80"	50 PSI	2.80/2.50-4	Radial Ball	310	.50"	3.00"	3.50	8-940BLKCHROME

Jarvis Bellman Pneumatic wheels are high quality pneumatic tires designed to enhance the appearance of your equipment.





Pemco Never-Flat Micro-Cellular Polyurethane Wheels

Nominal Wheel Dia.	Nominal Tread Width	Tire Type	Bearing	Load Capacity (lbs)	Bearing ID	Hub Length	Approx. Weight (lbs)	Wheel Part #
8"	2.80"	2.80/2.50-4	Precision Ball	275	.50"	3.75"	3.21	WH8X2.5NFPF
10"	4.10"	4.10/3.50-4	Precision Ball	300	.50"	4.00"	4.07	WH10X3.5NFPF
12"	4.10"	4.10/3.50-6	Precision Ball	500	.63"	4.00"	6.00	WH12X3.5NFPF

Never-Flat wheels feature a unique open and closed micro-cellular polyurethane wheel technology. The wheel acts just like a pneumatic tire ... but will never go flat



Made from recycled tire rubber

Pemco Never-Flat CR Crumb Rubber Wheels

Nominal Wheel Dia.	Nominal Tread Width	Bearing	Load Capacity (lbs)	Bearing ID	Hub Length	Approx. Weight (lbs)	Wheel Part #
6"	1.50"	Straight Roller	300	.50"	2.25"	1.45	WH6X150CRR
	2.00"	Straight Roller	500	.50"	2.25"	2.73	WH8X200CRR
8"	2.25"	Industrial Ball	500	.63"	2.50"	3.59	WH8X225CRF10
	2.25"	Industrial Ball	500	.75"	2.50"	3.59	WH8X225CRF12
10"	2.25"	Industrial Ball	550	.63"	3.25"	5.85	WH10X250CRF10
	2.25"	Industrial Ball	550	.75"	3.25"	5.85	WH10X250CRF12
12"	2.25"	Industrial Ball	600	.75"	3.25"	8.78	WH12X300CRF10
	3.00"	Industrial Ball	600	.75"	3.25"	8.78	WH12X300CRF12
	3.00"	Delrin	600	1.00"	2.50"	8.78	WH12X300CRD16

Recycled crumb rubber tread on polypropylene core. Special blend of granular rubber and chemical accelerators, cured under tremendous pressure



Albion Never-Flat SZ Solid Monoprene Wheels

Nominal Wheel Dia.	Nominal Tread Width	Bearing	Load Capacity (lbs)	Bearing ID	Hub Length	Approx. Weight (lbs)	Wheel Part #
6"	2.00"	Precision Ball	250	.50"	2.44"	2.30	SZ0622808
8"	2.00"	Precision Ball	280	.50"	2.44"	3.70	SZ0822808
10"	3.50"	Precision Ball	440	.50"	3.25"	6.80	SZ1062808

Monoprene rubber SZ wheel provides you with all the benefits of a pneumatic tire, without the hassle of getting a flat. The maintenance free wheels rejects debris and are non-marking.

SV gray models also available.

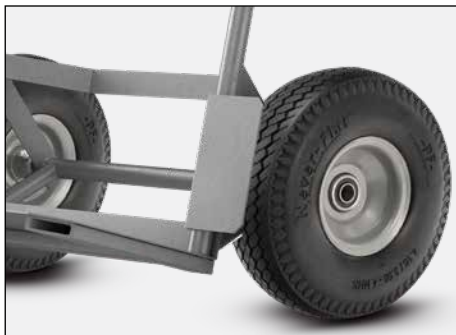




Your Choice of Air Ride or Cushion Ride Never-Flat Hand Trucks

Colson Group branded hand truck wheels feature the popular off-set hub design. These light weight, high performance hand truck wheels roll longer, quieter and smoother without marking floors.

- Excellent for transporting fragile cargo
- Excellent for off-road applications typical with hand truck applications
- Your choice:
 - Albion Air Ride Pneumatics
 - Pemco Never-Flat Micro-Cellular Polyurethane
 - Pemco Never-Flat CR Crumb Rubber
 - Albion Xtra-Soft Cushion TPR Tread
- Albion pneumatic hand truck wheels are easy to maintain with standard air nozzle and zerk fitting
- Never-Flat wheels operate like pneumatic tires ... but will never go flat
- Shock absorbing wheels provide ultimate cargo and floor protection
- Quiet, smooth mobility
- Non-marking design will not “scuff up” your floors.
- Zerk fitting for easy axle maintenance
- Sealed precision ball bearings standard



One side of tire has the hub that connects to the axle, the other side is off-set to accommodate hand truck applications.

Pneumatic Hand Truck Wheels



Albion Pneumatic Hand Truck Wheel – 4 Ply

Nominal Wheel Dia.	Nominal Tread Width	Max. Air Pressure	Tire Type	Bearing	Load Capacity (lbs)	Bearing ID	Hub Length	Approx. Weight (lbs)	Wheel Part #
10"	4.10"	50 PSI	4.1-3.5-4	Precision Ball	350	.63"	2.25" offset	2.00	S01062810

Albion offers a complete line of pneumatic wheels from 6" to 18" in diameter. The durable wheels feature 4-Ply construction.



Pemco Never-Flat Micro-Cellular Polyurethane Hand Truck Wheel

Nominal Wheel Dia.	Nominal Tread Width	Tire Type	Bearing	Load Capacity (lbs)	Bearing ID	Hub Length	Approx. Weight (lbs)	Wheel Part #
10"	4.10"	4.1-3.5-4	Precision Ball	350	.63"	2.25" offset	3.82	WH10X3.5NFPPOFF

These economical 4-Ply sawtooth pattern pneumatic features zerk fitting and air nozzle for easy maintenance. Wheels feature precision roller bearings for a smooth ride.



Pemco Never-Flat CR Crumb Rubber Hand Truck Wheel

Nominal Wheel Dia.	Nominal Tread Width	Bearing	Load Capacity (lbs)	Bearing ID	Hub Length	Approx. Weight (lbs)	Wheel Part #
8"	2.25"	Industrial Ball	500	.63"	2.25" offset	3.59	WH8X225CRFOFF10
	2.25"	Industrial Ball	500	.75"	2.25" offset	3.59	WH8X225CRFOFF12
10"	2.50"	Industrial Ball	550	.63"	2.25" offset	8.78	WH10X250CRFOFF10
	2.50"	Industrial Ball	550	.75"	2.25" offset	8.78	WH10X250CRFOFF12

Recycled crumb rubber tread on polypropylene core. Special blend of granular rubber and chemical accelerators, cured under tremendous pressure



Albion Xtra-Soft Hand Truck Wheel

Nominal Wheel Dia.	Nominal Tread Width	Bearing	Load Capacity (lbs)	Bearing ID	Hub Length	Approx. Weight (lbs)	Wheel Part #
8"	2.00"	Precision Ball	250	.50"	2.25"	2.00	XR0822808H
	2.00"	Precision Ball	250	.63"	2.25"	2.00	XR0822810H
10"	2.00"	Precision Ball	250	.50"	2.25"	3.00	XR1022808H
	2.00"	Precision Ball	250	.63"	2.25"	3.00	XR1022810H

Tread features 50-60 Shore A durometer TPR rubber on polypropylene core. Wheels are complete with spanner bushing & nylon sealed retaining washers. Precision sealed bearings come with top hats.

EZ Ride



Pneumatic Casters and Wheels Feature These Colson Group Brands:

PEMCO **colson** **ALBION**



Colson Group is the largest manufacturer and distributor of caster and wheel products in the world. Over 1,600 global employees support Colson Group's leading product portfolio and proprietary global value chain. World renowned brands, such as: Colson, Albion, Shepherd, Jarvis, Rhombus, MedCaster, Revvo, Pemco, Faultless, and Bassick are manufactured and marketed around the world through Colson Group's 25 global facilities – where over 192,000 products are shipped out every day.

www.colsongroup.com

USA Phone: +1.800.253.0868